

Outcome Measures and RESULTS

FAMILY INDEPENDENCE

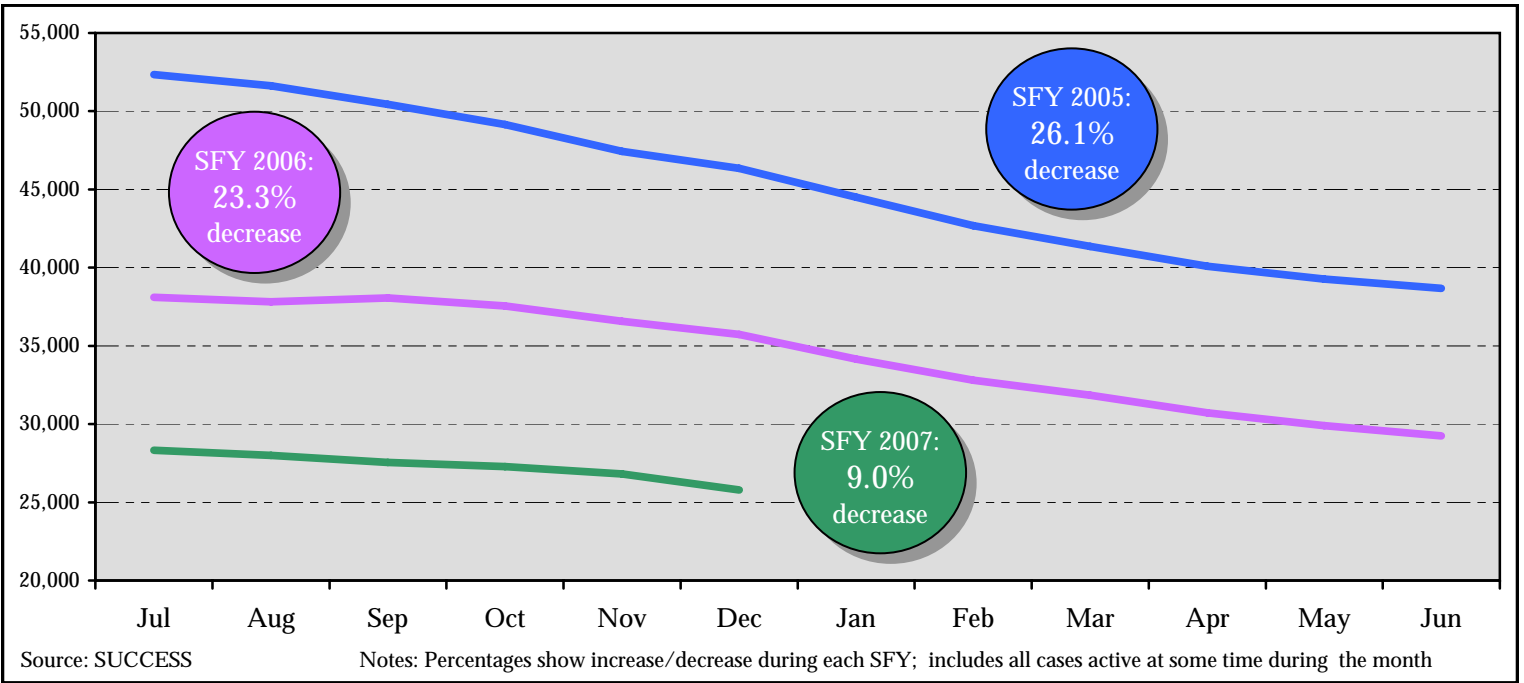
December 2006



Definitions and Data Sources

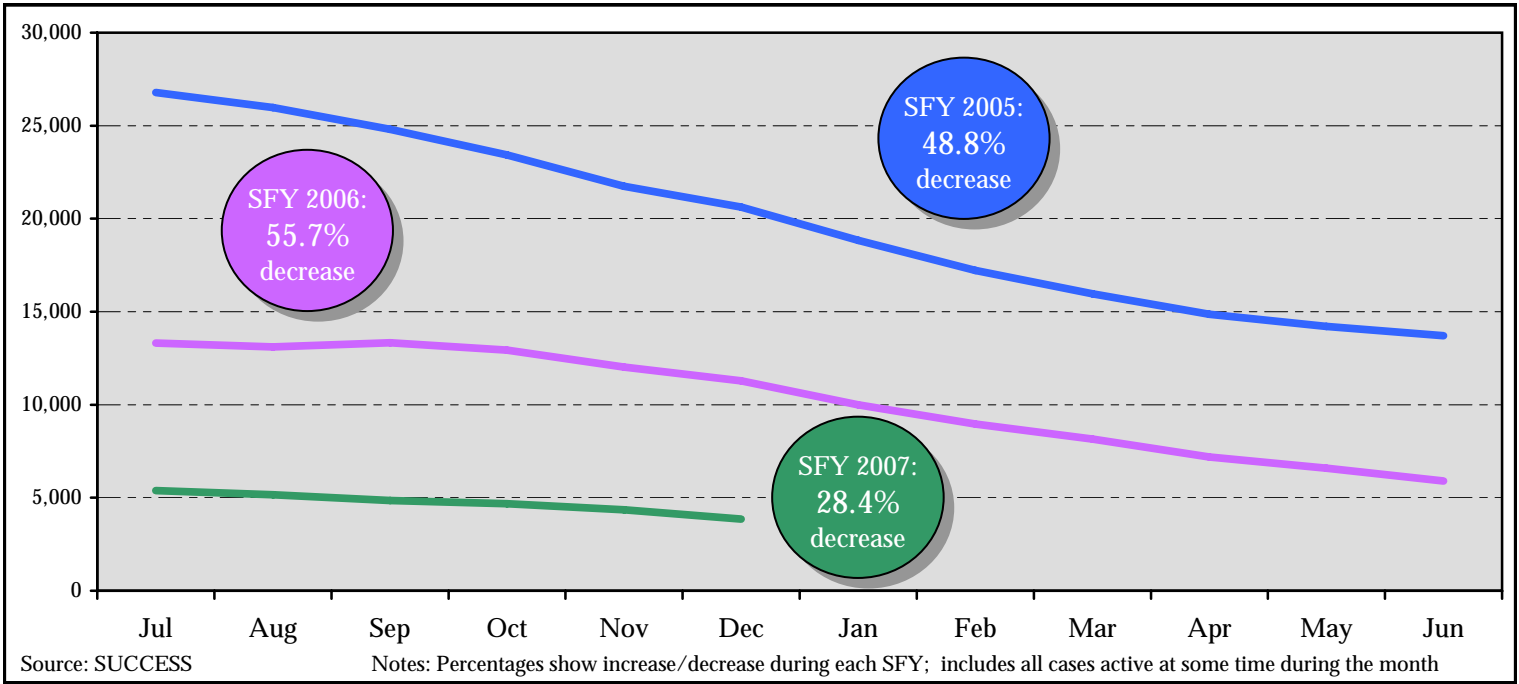
TANF Cases (Total/Adult/Child Only).....	1-2
Includes all cases active at some time during the month	
Source: SUCCESS	
Food Stamp Cases	3
Includes all cases active at some time during the month	
Source: SUCCESS	
Medicaid Cases	3
Includes cases active at the end of the month	
Source: SUCCESS	
TANF Work Participation Rate	4
Of all the families with a Temporary Assistance to Needy Families (TANF) work requirement, the percentage of families that met the work requirement.	
<i>State Target: greater than or equal to 70.0%</i>	Source: SUCCESS
Food Stamp Participation Rate	4
The ratio of number of food stamp persons over the estimated persons at or below 125% of the Poverty level.	
<i>State Target: greater than or equal to 74.0%</i>	Source: SUCCESS, U.S. Census Bureau
Medicaid (ABD) Standard of Promptness.....	5
Of all the Aged, Blind, Disabled Medicaid applications for benefits, the percentage that was completed within the mandated Standard of Promptness (SOP).	
<i>State Target: greater than or equal to 96.0%</i>	Source: SUCCESS
Medicaid (Family) Standard of Promptness.....	5
Of all the Family Medicaid applications for benefits, the percentage that was completed within the mandated Standard of Promptness (SOP).	
<i>State Target: greater than or equal to 96.0%</i>	Source: SUCCESS
Family Independence Casemanager Separations.....	6
The number of Family Independence casemanagers who left their positions for any reason, including transfer to other divisions within DHR, transfer to another state agency/office, resignations, or retirement. It does not include county-to-county transfers.	
Source: PeopleSoft	
Family Independence Casemanager Vacancies	6
The number of Family Independence casemanager positions that are not filled.	
Source: PeopleSoft	

TANF Cases



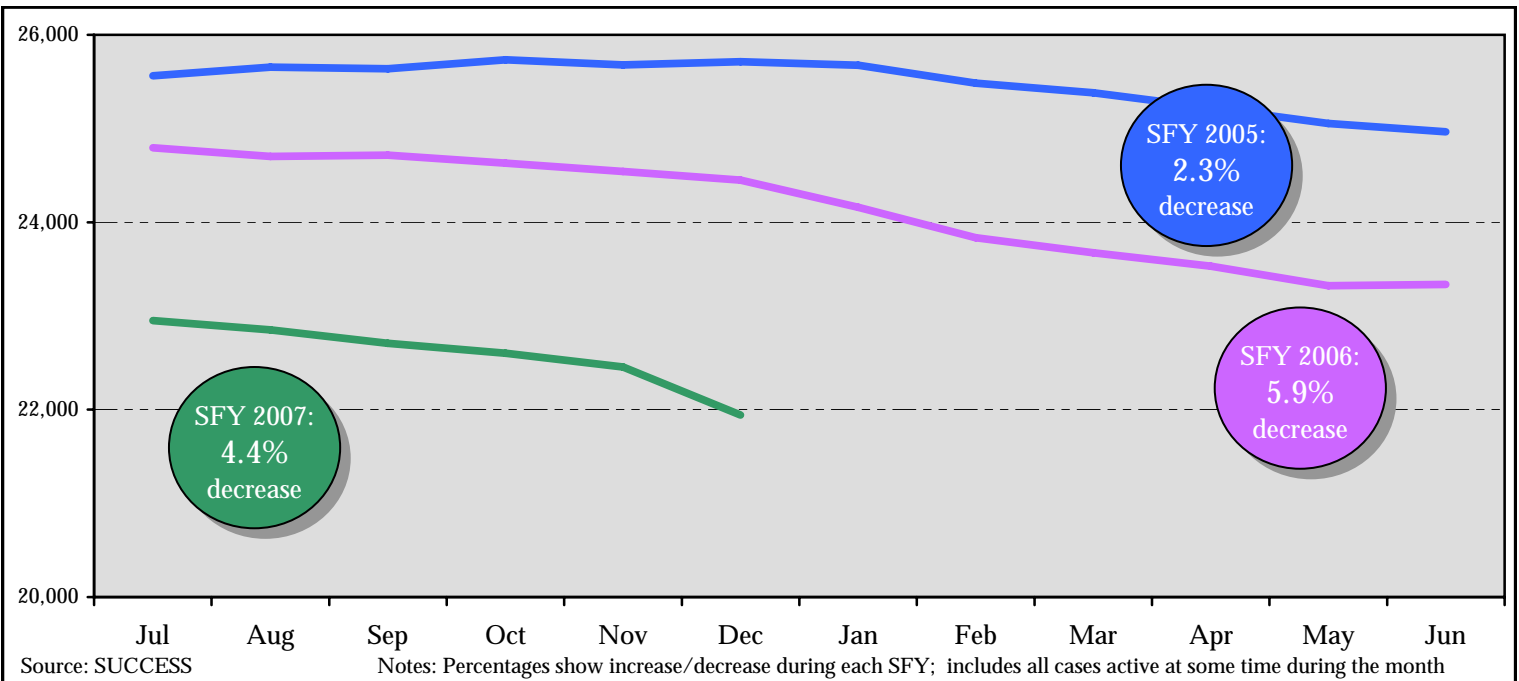
Jul	Aug	Sep	Oct	Nov	Dec	Jan	Feb	Mar	Apr	May	Jun
28,335	28,003	27,553	27,284	26,810	25,798						
38,104	37,808	38,053	37,560	36,560	35,734	34,156	32,804	31,834	30,716	29,910	29,237
52,342	51,625	50,442	49,159	47,426	46,337	44,510	42,695	41,350	40,078	39,269	38,669

TANF Cases - Adult



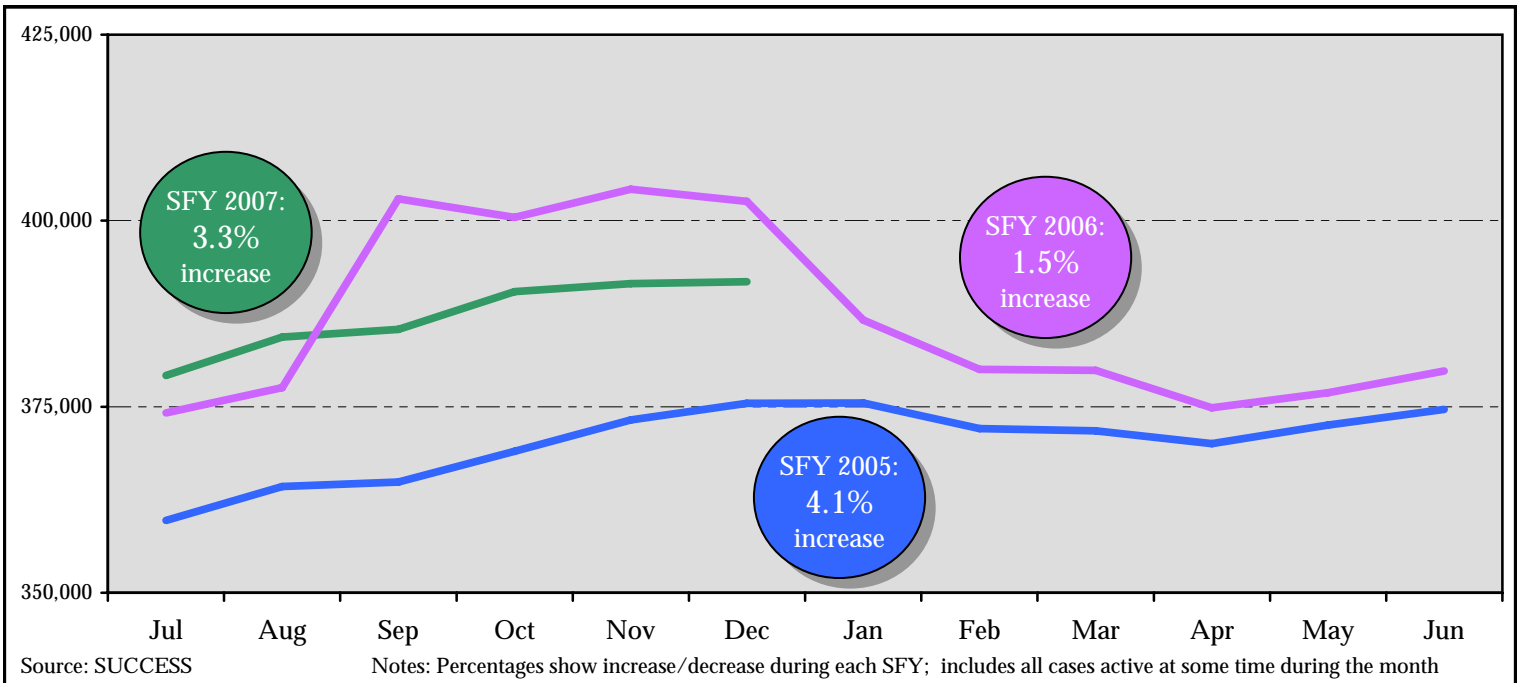
Jul	Aug	Sep	Oct	Nov	Dec	Jan	Feb	Mar	Apr	May	Jun
5,386	5,152	4,844	4,682	4,355	3,856						
13,308	13,105	13,338	12,931	12,017	11,285	9,998	8,969	8,161	7,184	6,587	5,901
26,780	25,970	24,805	23,427	21,747	20,624	18,836	17,211	15,967	14,855	14,216	13,703

TANF Cases - Child Only



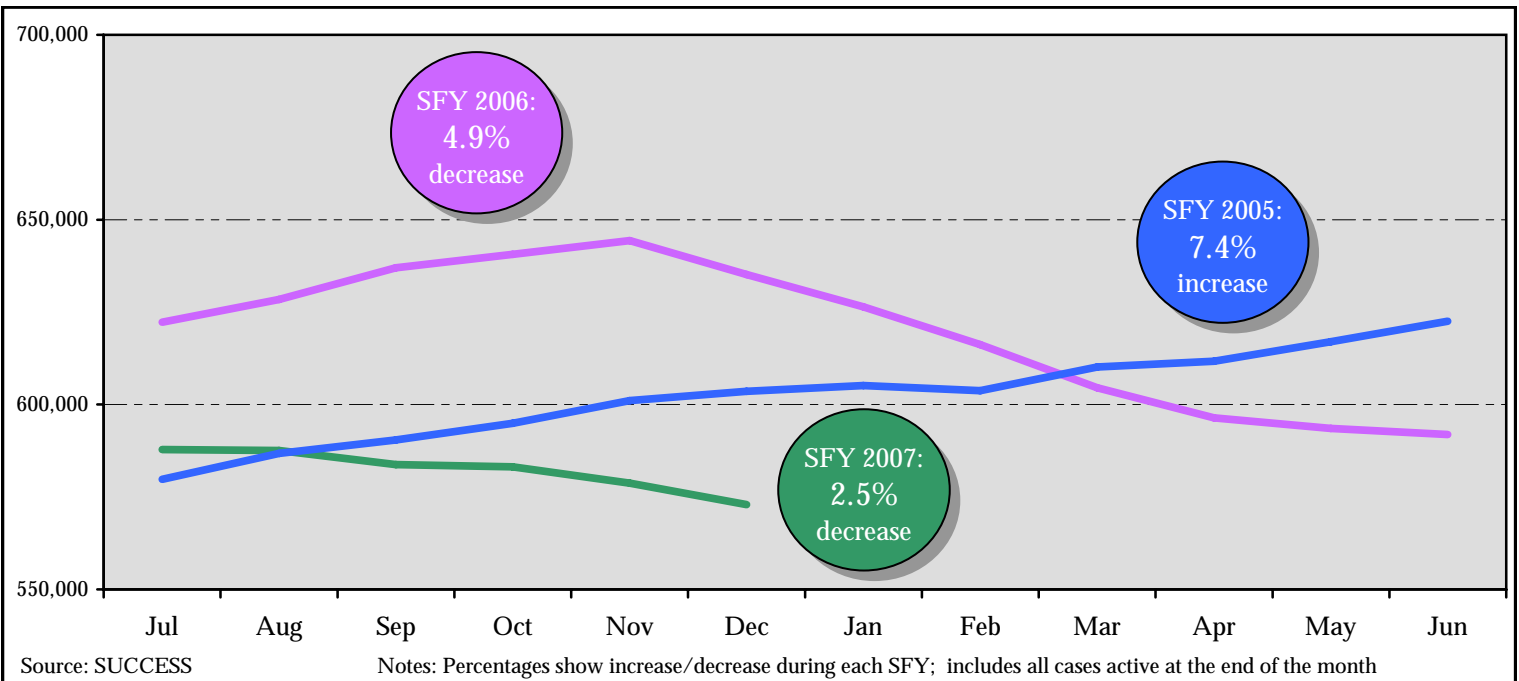
Jul	Aug	Sep	Oct	Nov	Dec	Jan	Feb	Mar	Apr	May	Jun
22,949	22,851	22,709	22,602	22,455	21,942						
24,796	24,703	24,715	24,629	24,543	24,449	24,158	23,835	23,673	23,532	23,323	23,336
25,562	25,655	25,637	25,732	25,679	25,713	25,674	25,484	25,383	25,223	25,053	24,966

Food Stamp Cases



Jul	Aug	Sep	Oct	Nov	Dec	Jan	Feb	Mar	Apr	May	Jun
379,188	384,378	385,390	390,446	391,522	391,785						
374,158	377,555	402,921	400,441	404,222	402,613	386,637	379,999	379,899	374,850	376,886	379,799
359,729	364,277	364,889	369,029	373,228	375,447	375,513	372,059	371,753	370,031	372,539	374,633

Medicaid Cases



Jul	Aug	Sep	Oct	Nov	Dec	Jan	Feb	Mar	Apr	May	Jun
587,810	587,558	583,754	583,110	578,746	572,899						
622,254	628,430	637,012	640,593	644,319	635,136	626,386	616,173	604,547	596,420	593,561	591,870
579,777	586,784	590,390	594,915	601,032	603,608	605,149	603,739	610,158	611,671	616,983	622,550

